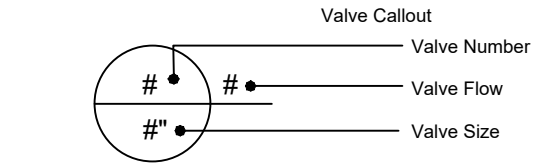
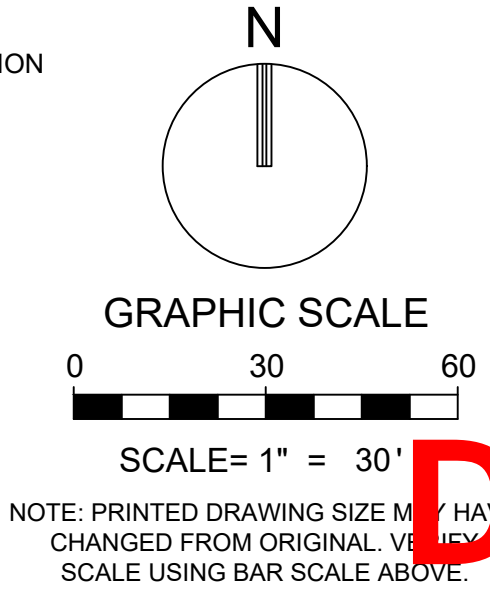


IRRIGATION SCHEDULE	
SYMBOL	MANUFACTURER/MODEL/DESCRIPTION
	RAIN BIRD 1806-PRS 15 STRIP SERIES SHRUB SPRAY 6IN. POP-UP SPRINKLER WITH CO-MOLDED WIPER SEAL. SIDE AND BOTTOM INLET. 1/2IN. NPT FEMALE THREADED INLET. WITH PRESSURE REGULATING DEVICE.
	RAIN BIRD 1806-PRS 5 SERIES MPR SHRUB SPRAY 6IN. POP-UP SPRINKLER WITH CO-MOLDED WIPER SEAL. SIDE AND BOTTOM INLET. 1/2IN. NPT FEMALE THREADED INLET. WITH PRESSURE REGULATING DEVICE.
	RAIN BIRD 1806-PRS 8 SERIES MPR SHRUB SPRAY 6IN. POP-UP SPRINKLER WITH CO-MOLDED WIPER SEAL. SIDE AND BOTTOM INLET. 1/2IN. NPT FEMALE THREADED INLET. WITH PRESSURE REGULATING DEVICE.
	RAIN BIRD 1806-PRS 15 STRIP SERIES SHRUB SPRAY 6IN. POP-UP SPRINKLER WITH CO-MOLDED WIPER SEAL. SIDE AND BOTTOM INLET. 1/2IN. NPT FEMALE THREADED INLET. WITH PRESSURE REGULATING DEVICE.
	RAIN BIRD 1806-PRS 10 SERIES MPR SHRUB SPRAY 6IN. POP-UP SPRINKLER WITH CO-MOLDED WIPER SEAL. SIDE AND BOTTOM INLET. 1/2IN. NPT FEMALE THREADED INLET. WITH PRESSURE REGULATING DEVICE.
	RAIN BIRD 1806-PRS 12 SERIES MPR SHRUB SPRAY 6IN. POP-UP SPRINKLER WITH CO-MOLDED WIPER SEAL. SIDE AND BOTTOM INLET. 1/2IN. NPT FEMALE THREADED INLET. WITH PRESSURE REGULATING DEVICE.
	RAIN BIRD 1806-PRS 15 SERIES MPR SHRUB SPRAY 6IN. POP-UP SPRINKLER WITH CO-MOLDED WIPER SEAL. SIDE AND BOTTOM INLET. 1/2IN. NPT FEMALE THREADED INLET. WITH PRESSURE REGULATING DEVICE.
	RAIN BIRD 1806-PRS ADJ SHRUB SPRAY 6IN. POP-UP SPRINKLER WITH CO-MOLDED WIPER SEAL. SIDE AND BOTTOM INLET. 1/2IN. NPT FEMALE THREADED INLET. WITH PRESSURE REGULATING DEVICE.
SYMBOL	MANUFACTURER/MODEL/DESCRIPTION
	RAIN BIRD 5006-PC 6.0 TURF ROTOR, 6IN. POP-UP, PLASTIC RISER. ADJUSTABLE TO FULL CIRCLE. STANDARD ANGLE NOZZLE.
SYMBOL	MANUFACTURER/MODEL/DESCRIPTION
	IRRIGATION LATERAL LINE: PVC CLASS 160 SDR 26 SYSTEM PIPE SIZE 3/4" SHALL BE CLASS 200 PVC; SYSTEM PIPE SIZE 1" OR GREATER SHALL BE CLASS 160 PVC.
	IRRIGATION MAINLINE: PVC SCHEDULE 40



- NOTES:
- ALL SOD AND LANDSCAPE TO RECEIVE 100% COVERAGE WITH 100% OVERLAP FROM AN AUTOMATIC IRRIGATION SYSTEM USING AN APPROVED WATER SOURCE.
 - A RAIN SENSOR MUST BE INSTALLED TO OVER-RIDE THE CONTROLLER.
 - BUBBLERS TO BE PROVIDED FOR NEW AND RELOCATED TREES AND PALMS.
 - CONTRACTOR IS RESPONSIBLE FOR ALL CONDITIONS AND IRRIGATION SPECIFICATION ATTACHED TO THIS PLAN. PLAN AND SPECIFICATIONS SHALL BE CONSIDERED CONTRACT DOCUMENTS.
 - INVESTIGATE TO DETERMINE AND VERIFY THE LOCATION OF UNDERGROUND UTILITIES BEFORE EXCAVATION.
 - REFER TO SHEET LI-501 FOR ADDITIONAL IRRIGATION SPECIFICATIONS AND DETAILS.
 - NOZZLE SELECTION BASED ON COVERAGE REQUIREMENTS.



KEITH
301 East Atlantic Blvd.
Pompano Beach, FL 33060
PH: (954) 788-3400

Florida Engineering Business License: CA7928
Florida Surveyor and Mapper Business License: LB6860
Florida Landscape Architecture Business License: LC26000457

REVISIONS		
NO.	DESCRIPTION	DATE

**PRELIMINARY PLAN
NOT FOR CONSTRUCTION**
THESE PLANS ARE NOT FULLY PERMITTED AND ARE SUBJECT TO REVISIONS MADE DURING THE PERMITTING PROCESS.
RESPONSIBILITY FOR THE USE OF THESE PLANS PRIOR TO OBTAINING PERMITS FROM ALL AGENCIES HAVING JURISDICTION OVER THE PROJECT WILL FALL SOLELY UPON THE USER.

ISSUE DATE: 07/03/25
DESIGNED BY: SL, RK
DRAWN BY: SL, GM
CHECKED BY: KS
BID-CONTRACT:

PAUL H. WEINBERG, PLA
FLORIDA REG. NO. LA666804
(FOR THE FIRM)

CLIENT
GREEN MILLS GROUP

PROJECT
ASPIRE 1650

SHEET TITLE
IRRIGATION PLAN

LI-101
PROJECT NUMBER 16500.00